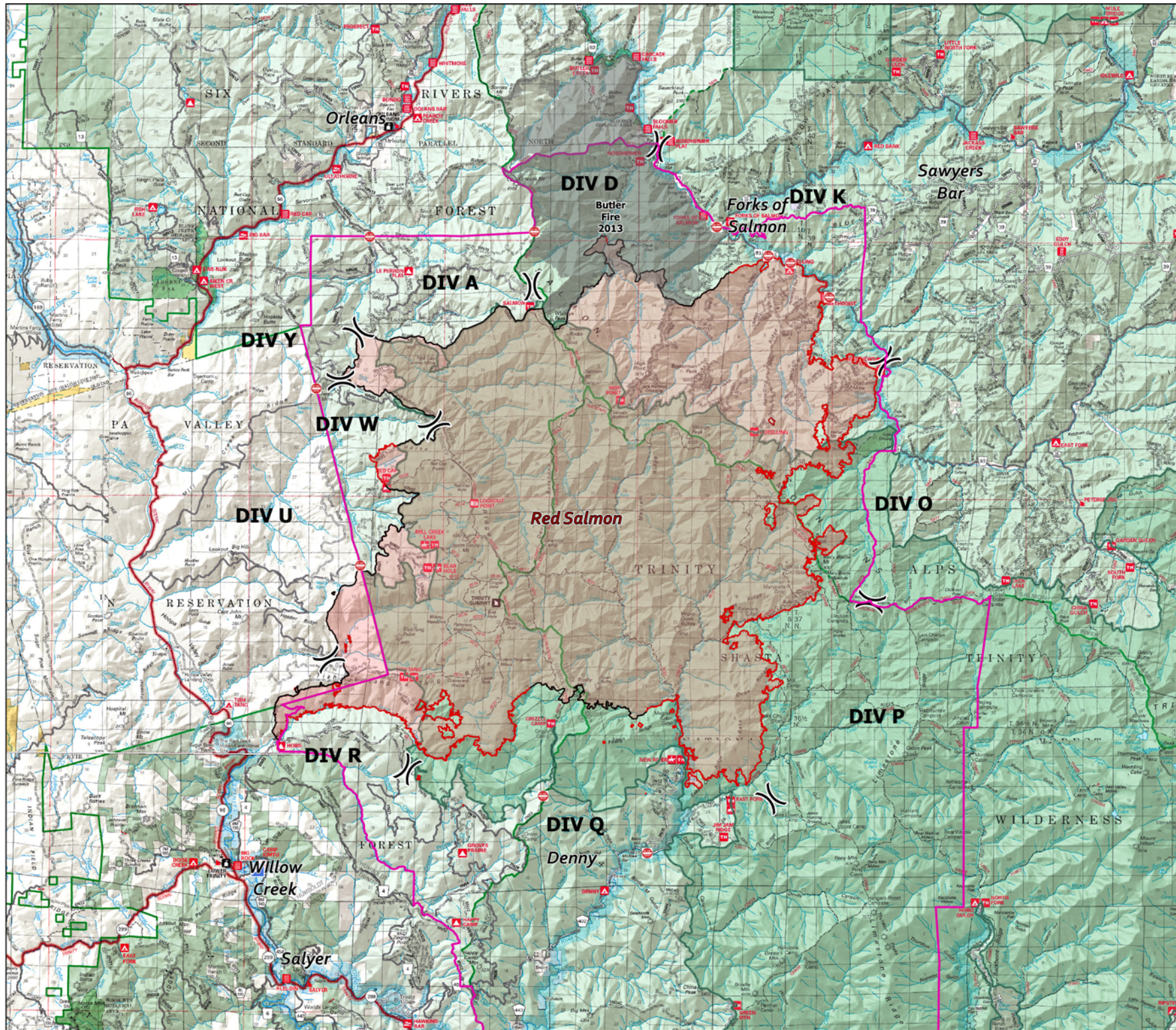


# Public Information Map

## Red Salmon Complex

CA-SRF-000656

10/08/2020



- Legend
- Incident Command Post
  - Division Break
  - Wildfire Perimeter
  - National Forest Fire Area Closures
  - Road Closures
  - Uncontrolled Fire Edge
  - Contained Line
  - Butler Fire

Portions of the National Forests are open for public use. Contact: <https://www.fs.usda.gov/klamath> or <https://www.fs.usda.gov/srnf> or <https://www.fs.usda.gov/stnf>

